

Leading Small Scale
Wind Turbine components Manufacturer



ISO 9001:2008
ISO 14001:2004



MODEL NAME : WPT-3000-200R-220

ELECTRICAL SPECIFICATION	
Rated Output Power (W)	3000
Rectified DC Voltage (V)	-
Gen. Output Voltage (AC)	220V (380)
Rotor	PM Type (Out-rotor)
Stator	Cored Type
Rated speed (rpm)	200
Rated torque (N.m)	157.4
Efficiency (%)	91
Rate Current (A)	13.6
Start torque (Nm)	< 1
Gen. weight (Kg)	75

* Voltage modifiable

MECHANICAL SPECIFICATION	
Housing Material	Aluminum alloy
Shaft Material	S45C
Shaft Bearing	Ball Bearing



#101, BI-Center, Pukyung University, Yongdangdong, Namgu, Busan, KOREA
 Tel : + 82-51-629-7545 Fax : + 82-51-626-7546
 E-mail : wpt4u@hanmail.net & wpt@wpt.co.kr Website : wpt.co.kr

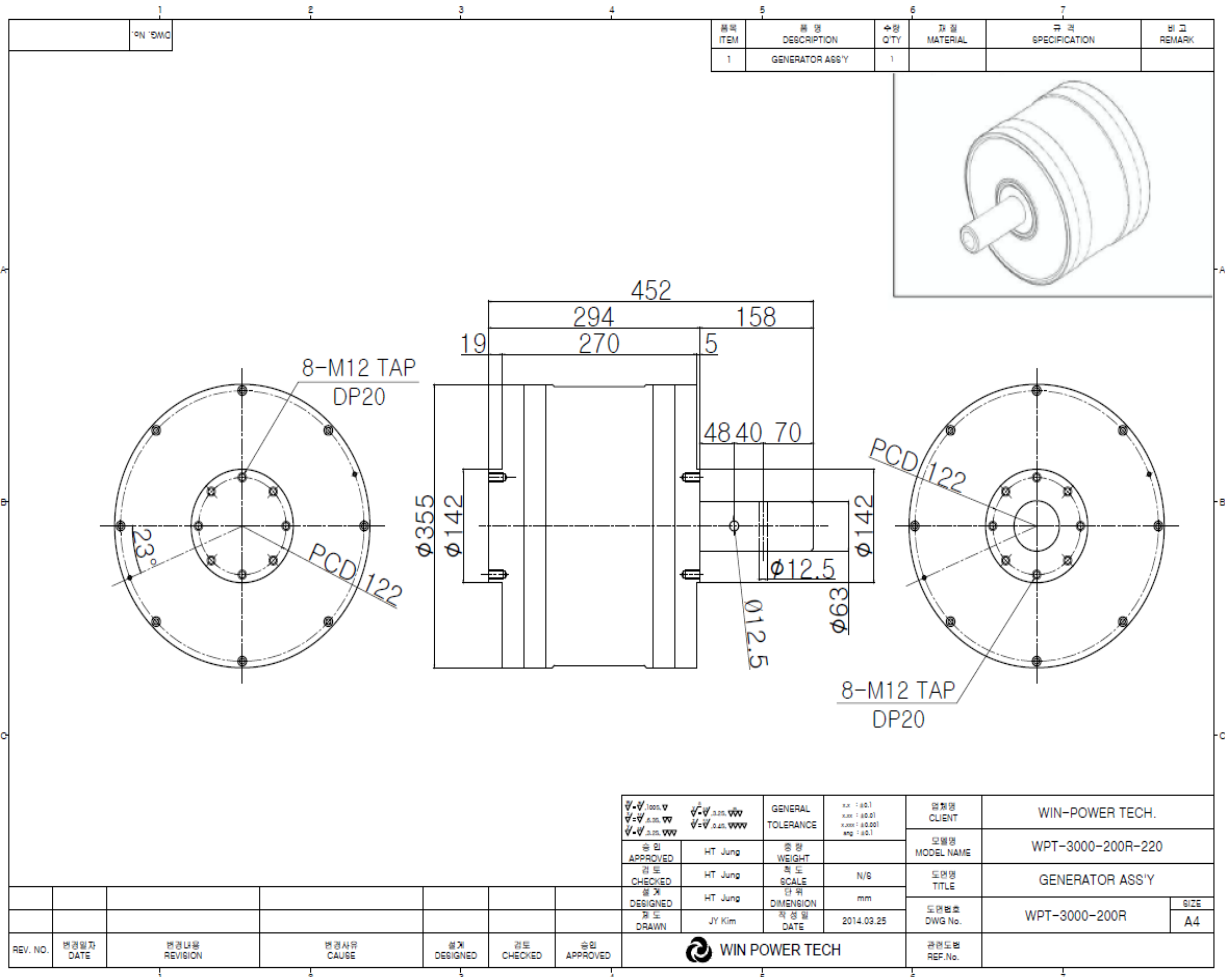
Leading Small Scale
Wind Turbine components Manufacturer



ISO 9001:2008
ISO 14001:2004



MODEL NAME : WPT-3000-200R-220



- A) Lead wire : 6SQ X 3C X 300mm
- B) Coating : Sermagard Coating
- C) Plating : Electroless Nickel
- D) Bearing : NTN



#101, BI-Center, Pukyung University, Yongdangdong, Namgu, Busan, KOREA
 Tel : + 82-51-629-7545 Fax : + 82-51-626-7546
 E-mail : wpt4u@hanmail.net & wpt@wpt.co.kr Website : wpt.co.kr

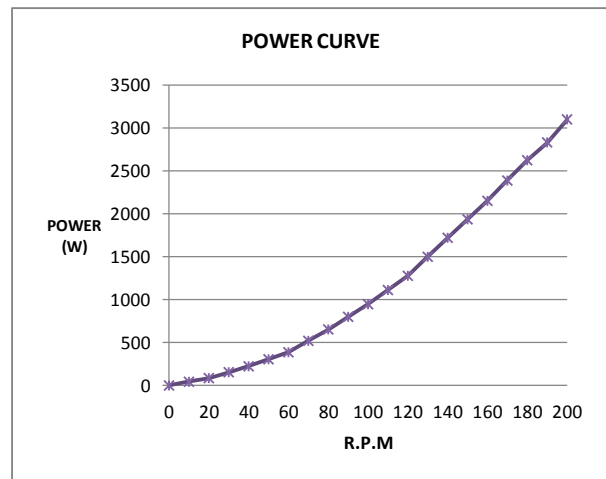
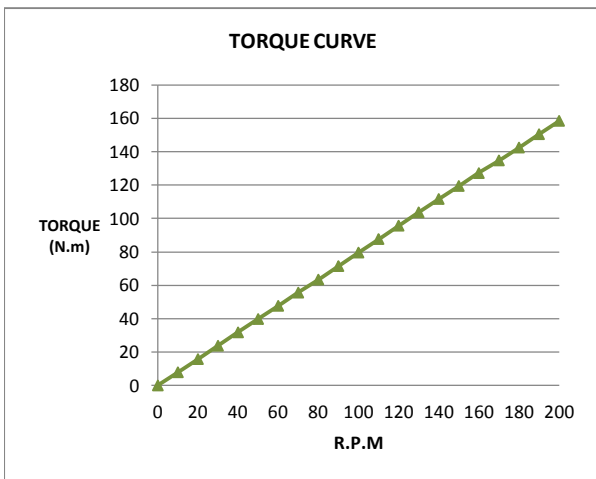
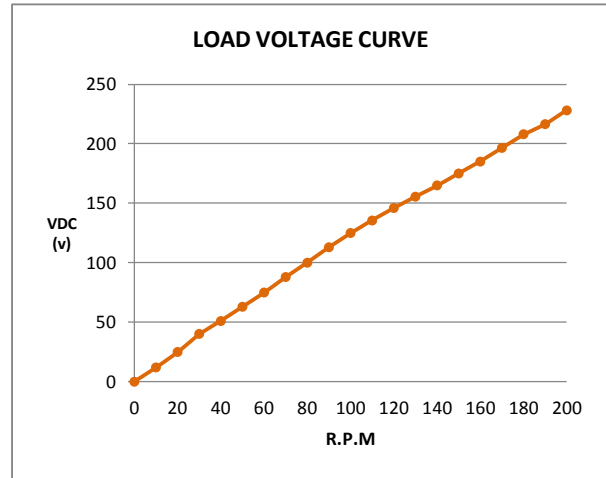
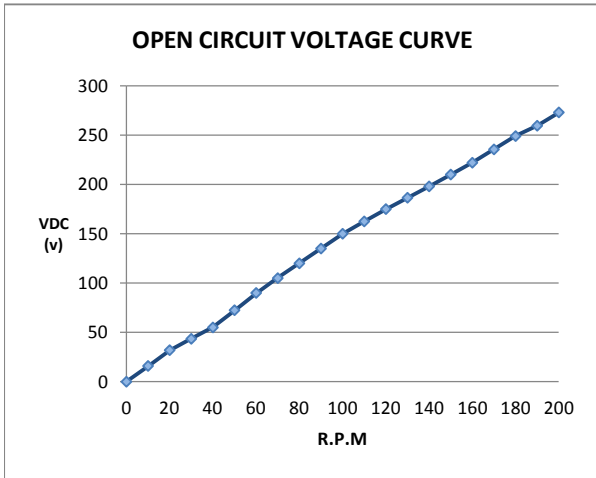
Leading Small Scale
Wind Turbine components Manufacturer



ISO 9001:2008
ISO 14001:2004



MODEL NAME : WPT-3000-200R-220



#101, BI-Center, Pukyung University, Yongdangdong, Namgu, Busan, KOREA
 Tel : + 82-51-629-7545 Fax : + 82-51-626-7546
 E-mail : wpt4u@hanmail.net & wpt@wpt.co.kr Website : wpt.co.kr